

2005  
Neddy

**Artists:**

Jaq Chartier

Mary Larson

Helen O'Toole

Joseph Park

Jeffrey Simmons

The 2005 Neddy Exhibition  
is on view at the  
Washington State  
Convention and Trade Center  
from April 12 – June 23, 2005  
and Tacoma Art Museum  
from April 12 – June 5, 2005.

This year's award ceremony  
will be held at Tacoma Art Museum  
on Saturday, June 4

Untitled  
I loosen with my hands all  
The floor  
Day wears the color that my  
Hands give it.  
A sign breathed in my room sets  
Sails swelling.  
And my gaze at tomorrow is  
An enduring dream.

Every floor in its reflecting on  
One's line is like those captives  
Whose sheer beauty makes one's  
Fingers straighten.  
I wait, I see; I wonder; and the  
Depth of color  
Is clear before me like a  
Strong light.

I explain with no words the  
Lining steps.  
I explain the feelings that  
Strike me.  
I explain the light on an  
Abstract with flattening, dark  
Inside.

I explain a reflecting  
Pattern against the floor.  
I explain the colors of the  
Seasons.  
I explain the mute happiness of  
A room.  
I explain the strangeness of  
A room.

I explain understanding  
With depth and space and  
Color through a room  
I explain the touch of  
Light and its brightness  
I explain many objects  
Through their differences  
I explain the relationship between  
The things that are here.

I explain the canvas forms  
I explain what makes the  
Color sing.  
I explain what makes a  
Reflecting light  
And how reflective are  
Slow moving hands

I render rightful tribute to the  
Light  
Coming the time of our newness  
Reflecting in our space  
I paint the hope of our eyes  
So that I  
May tell the future what man expects of it.

Ned Behnke - 1976

*As the Behnke Foundation moves from our first decade of supporting Northwest Artists to the next – the talent, creativity and devotion to art in our area is impressive. In celebration of our tenth year, “A Decade of Excellence: Celebrating the Neddy Artist Fellowship,” is currently on display at the Tacoma Art Museum. It is an exhibit that showcases the last nine years of extraordinary talent that we live with every day in the Pacific Northwest and it is with this catalogue that we begin to once again explore the talent that has been identified for this year’s award.*



Ned Behnke // *The flowered room with the mirror in back*  
oil on canvas // 48" x 48" // 1980  
Courtesy of the Behnke Foundation

The nominators, a very diverse and knowledgeable group, include Susan Dory, artist and 2003 Neddy Fellow; Tom Flood, artist; Rock Hushka, Curator of the Tacoma Art Museum; and Susan Rosenberg, Associate Curator of the Seattle Art Museum. Five artists were selected to be this year’s nominees. The artists include, Jaq Chartier, Mary Larson, Helen O’Toole, Joseph Park, and Jeffrey Simmons. Each of these artists received \$1000 from the Behnke Foundation in recognition of their nomination. Their work is currently on view both at the Tacoma Art Museum and the Washington State Convention and Trade Center.

The Behnke Foundation

invited, Lawrence Rinder to assess the artists’ work and meet with the artists in order to decide which artist will become the 2005 Neddy Fellow. Lawrence Rinder is Dean of Graduate studies at the California College of Art in San Francisco and Oakland and Adjunct Curator at the Whitney Museum of American Art in New York. Previously, he served as Curator of Contemporary Art at the Whitney Museum, Founding Director of the Wattis Institute at CCAC, and Assistant Director for Audience and Programs and Curator for Twentieth Century Art at the Berkeley Art Museum. He has organized over one hun-

dred exhibitions including the “2002 Whitney Biennial,” “BitStreams,” and “The American Effect” at the Whitney Museum; “Searchlight: Consciousness at the Millennium” at CCA; and “In a Different Light” at the Berkeley Art Museum. His writing has been published in *Artforum*, *Flash Art*, *Nest* and *The Village Voice* and a book of his selected writings, *Art Life*, will be published in August, 2005. We are honored to have a curator of Mr. Rinder’s ability selecting this year’s recipient.

Please join me and the other Behnke Foundation trustees in thanking

all that have helped us this year with special thanks to the Tacoma Art Museum, Union Bank of California, Marquand Books and the Washington State Convention and Trade Center.

And to all artists who “paint the hope of our eyes so that I may tell the future what man expects of it.”\*

Thank you.

Shari D. Behnke  
Founder, the Neddy

*It has been a great pleasure chairing the Neddy over the past two years. The Neddy has been an incredible educational experience for me personally. I have enjoyed meeting all of the nominees and learning about their own personal styles of work, methods, and most of all, their art.*

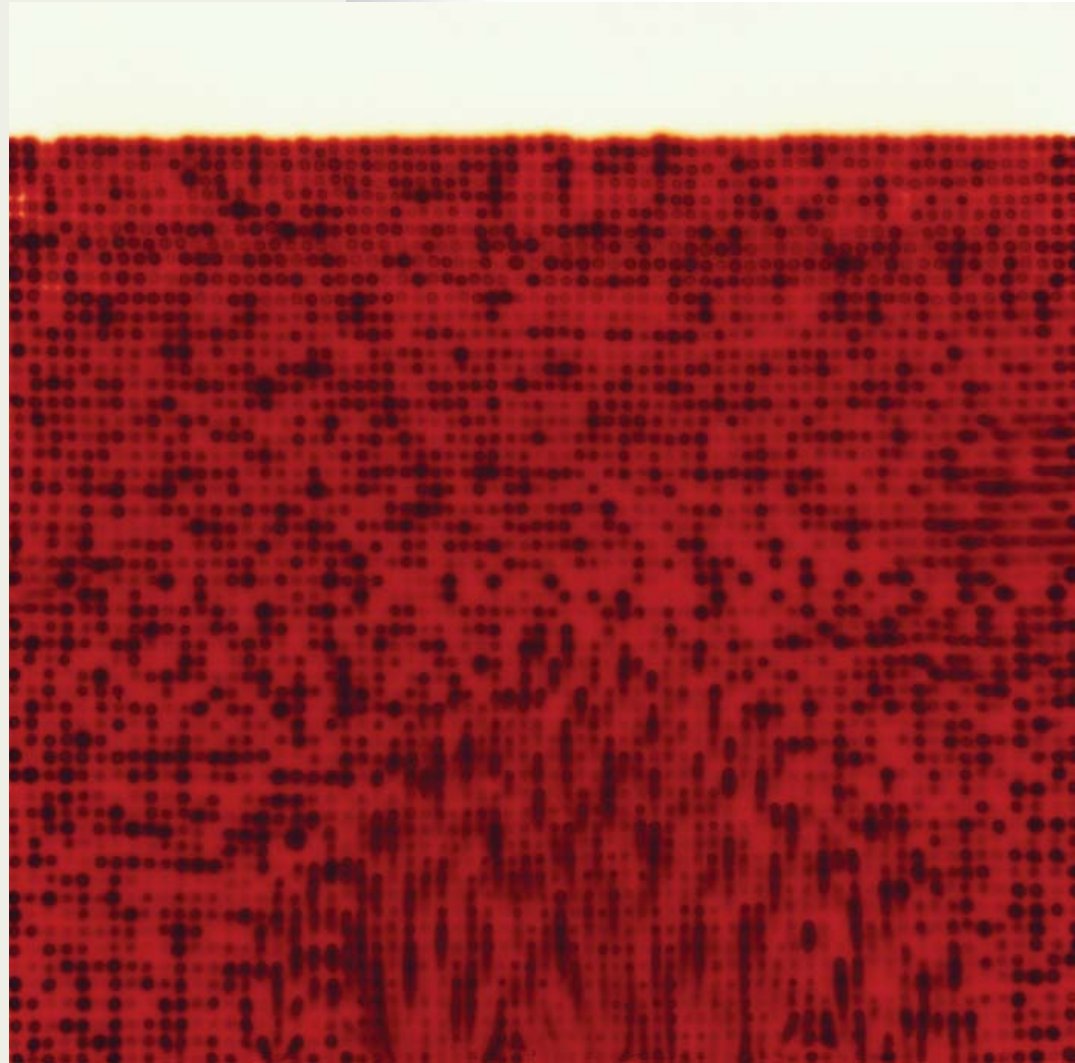
*I want to personally thank all of the nominators and our selector, Lawrence Rinder. As we celebrate our tenth year, I want to take time and remember my Uncle, Ned Behnke. Ned was a passionate artist and the Behnke family is fortunate to keep his memory alive through the Neddy.*

Marisa Behnke  
Chair of the Neddy

\*Untitled // Ned Behnke // 1976



J A Q C H A R T I E R



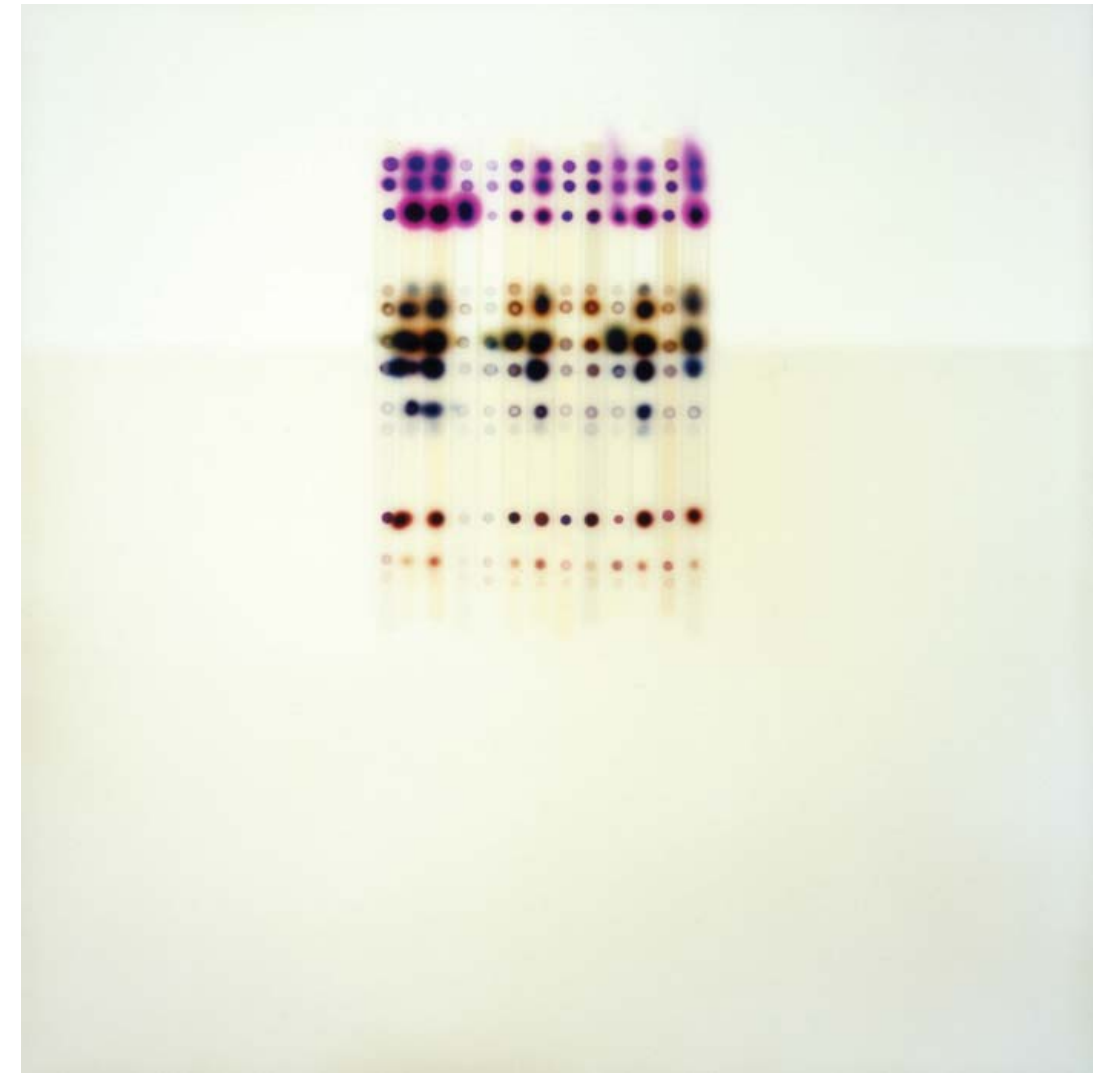
*Red Tests* // acrylic, stains and paint on wood panel  
30" x 30" // 2005

Jaq Chartier was born in Albany, Georgia in 1961. She received her BFA (Cum Laude) in Painting from the University of Massachusetts, Amherst in 1984, and her MFA in Painting from the University of Washington in 1994.

Chartier's solo exhibitions include Schroeder Romero, Brooklyn; Limn Gallery, San Francisco; Elizabeth Leach, Portland; Frumkin/Duval, Santa Monica; and William Traver, Seattle. Group exhibitions include "Gene(sis): Contemporary Art Explores Human Genomics," which originated at the Henry Art Gallery and traveled to the Berkeley Art Museum, the Weisman Art Museum, and the Block Museum of Art.

Her work has been published in *Artforum*, *Contemporary*, *Artweek*, *The Stranger*, *The San Francisco Chronicle*, *Artnet.com*, *The Seattle Weekly*, *New American Paintings*, *100 Artists of the West Coast*, and *Kunst aus dem Labor*. Awards include a 4Culture Special Projects Grant, an Artist Trust Fellowship, and a Betty Bowan PONCHO Special Recognition Award.

*Chartier lives and works in Seattle and is represented locally by Platform Gallery.*



*L. Hyacinth + Gray C* // acrylic, stains and paint on wood panel // 23" x 23" // 2004

M A R Y L A R S O N



Cynthia // acrylic on canvas // 30" x 30" // 2004

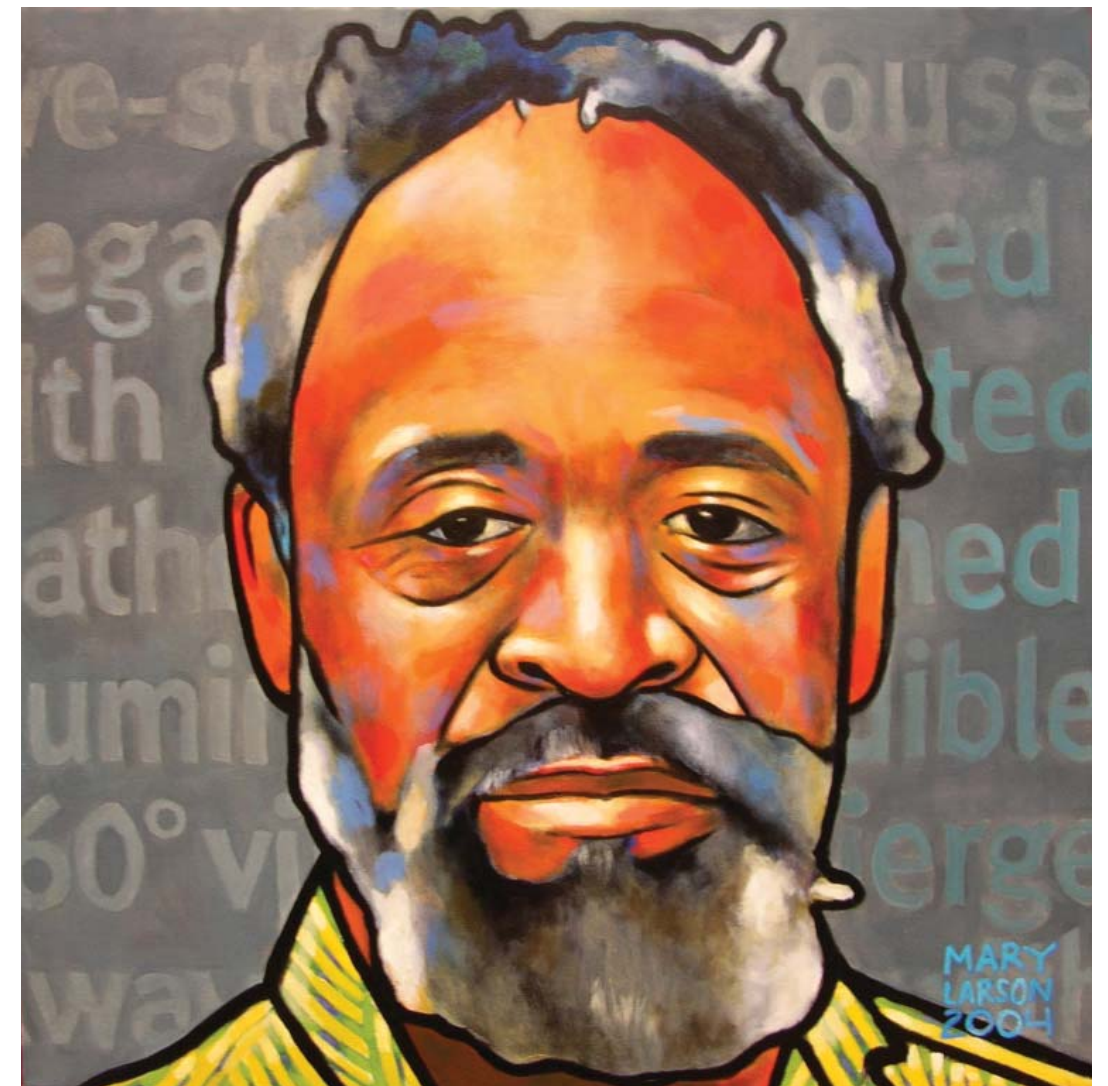
Mary Larson was born in 1972 in Seattle, Washington. She received her B.A. from Carroll College in Helena, Montana in 1995.

Larson's work has been shown in a variety of locales in Seattle's Pioneer Square, Capitol Hill and University neighborhoods.

Larson's work has been featured in People Magazine, The Asahi Shimbun newspaper of Tokyo, Japan, The Houston Chronicle, The Seattle Times, The Seattle Post Intelligencer and The Chronicle of Philanthro-

py. Her work has been profiled on ABC's World News Tonight with Peter Jennings and by PBS television affiliate KCTS. Larson's work has been acquired by The University of Washington Schools of Architecture, Nursing and Social Work, Seattle University School of Law and Harborview Medical Center as well as by numerous private collections around the United States.

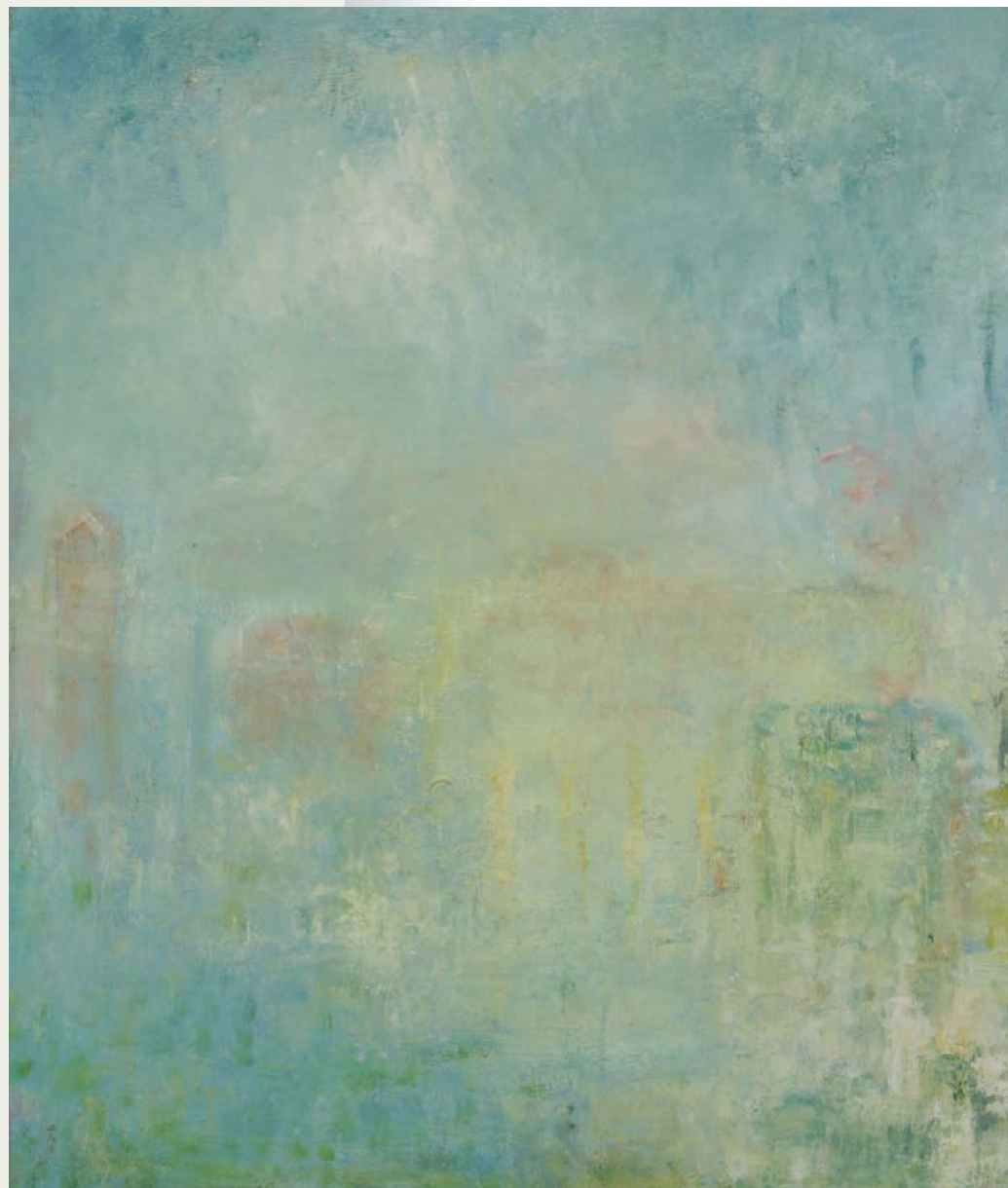
*Larson lives and works in Seattle and her work can be viewed at [www.marylaronart.com](http://www.marylaronart.com).*



David // acrylic on canvas // 30" x 30" // 2004



# H E L E N O ' T O O L E



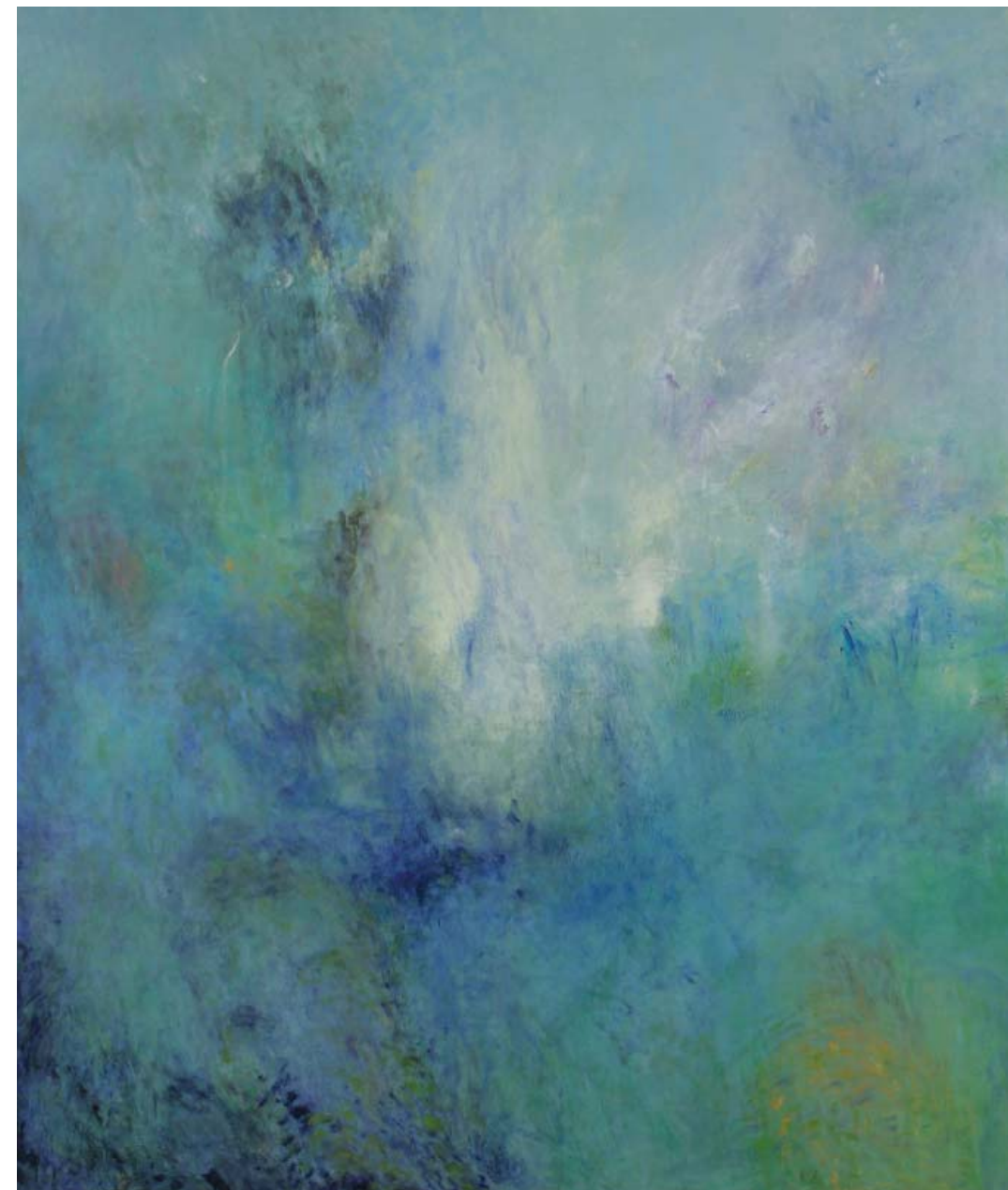
*Untitled // oil on linen // 28" x 24" // 2005*

Helen O'Toole was born in County Mayo, Ireland in 1963. She received her BFA in 1986 from the National College of Art and Design, Dublin.

In 1987, she moved to the United States to pursue her graduate studies at the Art Institute of Chicago where she graduated with an MFA in 1989. That year, she received a scholarship to the Skowhegan School of Painting and Sculpture. O'Toole has participated in a number of residency programs including the Fine Arts Work Center, Provincetown 1991-1992, the Tyrone Guthrie Center, Ireland, 1992 and the Bemis Foundation, Nebraska, 1992-1993. Her work has been exhibited in Ireland, Singapore, Chicago, Provincetown, Pittsburgh and Seattle,

and has been reviewed in numerous publications, including Artforum and Art News.

*O'Toole is represented by Linda Hodges Gallery, Seattle and she is currently an Associate Professor of Painting at the University of Washington.*



*Easter // oil on linen // 79" x 59" // 2005*



J O S E P H P A R K



*Deep Blue Sea* // oil on linen // 24" x 30" // 2004

Joseph Park was born in 1964. Park received a BAA from Cornish College of the Arts in 1988 and a MFA from the California Institute of the Arts in 1990.

His work has been shown in solo exhibitions at Howard House, Seattle; Rena Bransten Gallery, San Francisco; Roberts and Tilton, Los Angeles; and Augen Gallery, Portland. Park's work has been presented in numerous group exhibitions including Tacoma Art Museum, Tacoma; Carnegie Mellon University, Pittsburgh; Korean Cultural Center Art Gallery, Los Angeles; Gwangju Biennale, South Korea; Illinois State University, Normal, California State Fullerton Museum of Art, Fullerton and the Frye Art Museum, Seattle.



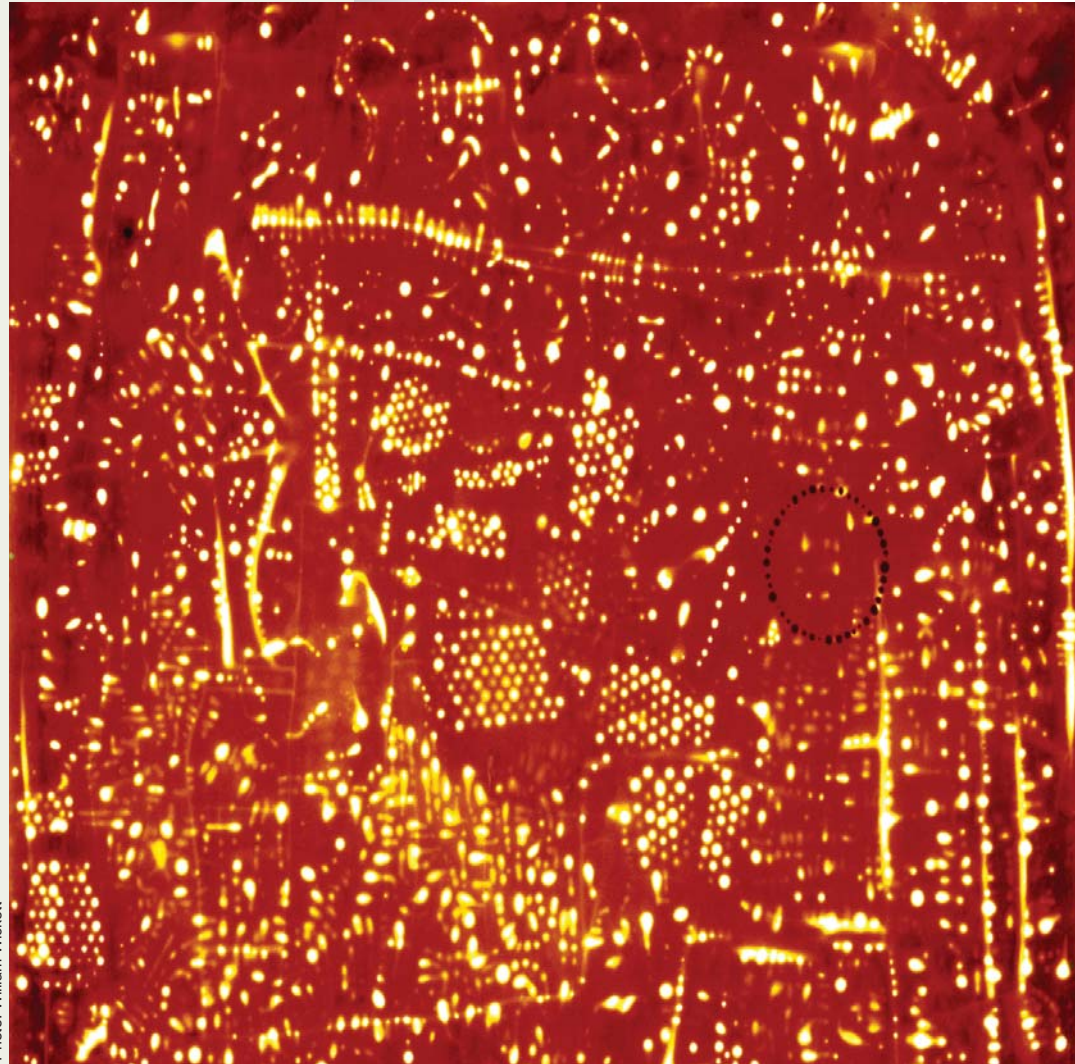
*Crescent Silhouette* // oil on linen // 36" x 30" // 2004

*Park's work has been published in Art Issues, The Stranger, and the Seattle Post-Intelligencer to name a few.*

*Park lives and works in Seattle and is represented locally by Howard House.*



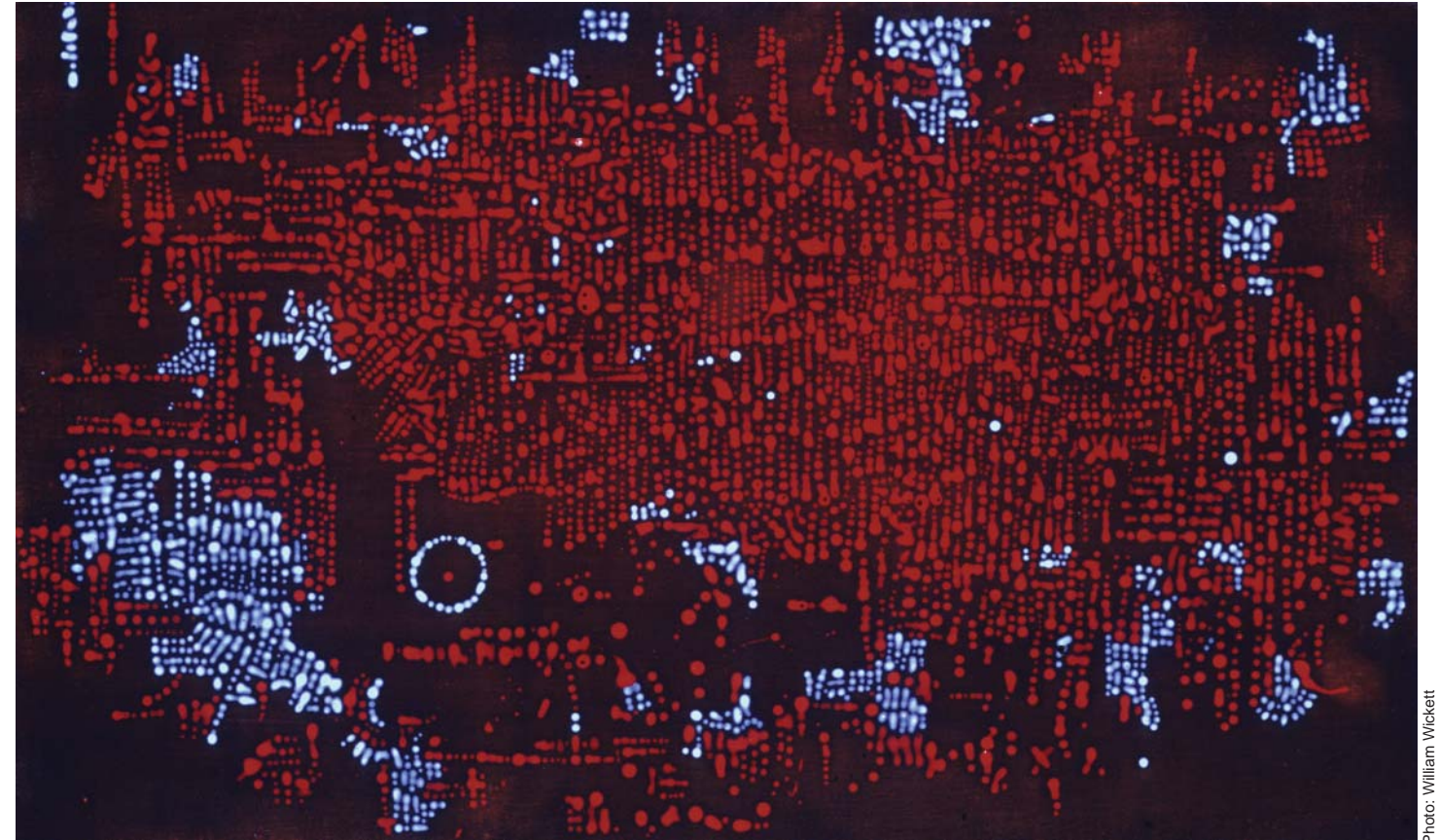
J E F F R E Y S I M M O N S



*Solar Sister* // acrylic polymer elumnsion on canvas over panel  
24" x 24" // 2004

Jeffrey Simmons was born in Cincinnati, Ohio in 1968. He received a BFA in Painting and Drawing from the University of Michigan School of Art in 1991, and moved to Seattle two years later.

Simmons' paintings have been exhibited at the Seattle Art Museum, the Tacoma Art Museum, the Art Gym at Marylhurst University, the Kresge Art Museum at Michigan State University, and in a solo exhibition at the Whatcom County Museum of Art. His work is in the collections of the Seattle Art Museum and the Tacoma Art Museum. He has been the recipient of a GAP award from Artist Trust and a Special Recognition Award from the Betty Bowen Committee of the Seattle Art Museum.



*Motion Picture Soundtrack* // acrylic polymer elumnsion on canvas over panel // 18.5" x 30.5" // 2004

His work has been published in *Art in America*, *The Seattle Times*, *The Portland Oregonian*, *The Seattle Weekly*, *The Ann Arbor News*, and *Artweek*.

*Simmons lives and works in Seattle. He is represented in the Northwest by the Greg Kucera Gallery.*



C L A I R E C O W I E

2004 Neddy Fellowship Recipient



Dragonflies (detail) // watercolor on paper // 32"x48" // 2004

*The Neddy Fellowship has been a continuous source of support over the last year. It has allowed me to purchase better materials, embark on larger-scale projects, drastically improve the quality of reproductions of my artwork, and most importantly, it has afforded me valuable, uninterrupted lengths of work time in my studio. The award is a tremendous honor that has helped me turn some baby steps into significant strides in a relatively short amount of time.*

Claire Cowie was born in 1975 in Charlotte, NC. She received her BFA from Washington University, St. Louis in 1997 and her MFA from the University of Washington in 1999.

Cowie has had solo exhibitions at the Henry Art Gallery and James Harris Gallery in Seattle, Elizabeth Leach Gallery in Portland, and cherydelosreyes Gallery in Los Angeles. Her work has been in recent group exhibitions at the Tacoma Art Museum, Marylhurst University Art Gym in Portland, and the Center on Contemporary Art, Seattle.

She has received a Pollock-Krasner Foundation Grant, a Fellowship Award from the Artist Trust/Washington State Arts Commission, and an Artist Trust GAP award.



Village VII (detail) // watercolor on paper // 12"x17.5" // 2004

Her work is included in the collections of Microsoft Corporation, 4Culture, Swedish Cancer Institute, the University of Missouri, the Henry Art Gallery, and the Tacoma

Art Museum. Her work has been published in the *Los Angeles Times*, *Artforum*, *Artweek*, *Artdish*, the *Seattle Times*, the *Seattle Post-Intelligencer*, and *The Stranger*.

*Cowie lives and works in Seattle and is represented locally by the James Harris Gallery.*



## Trustees of the Behnke Foundation

John S. Behnke, Chair

Marisa W. Behnke, Chair of *the Neddy*

Shari D. Behnke

Carl G. Behnke

Renee Behnke

Sally Skinner Behnke

Michelle McBride, Director



### **Behnke Foundation**

601 Union Street, Suite 3016  
Seattle WA 98101

<http://www.behnkefoundation.org>